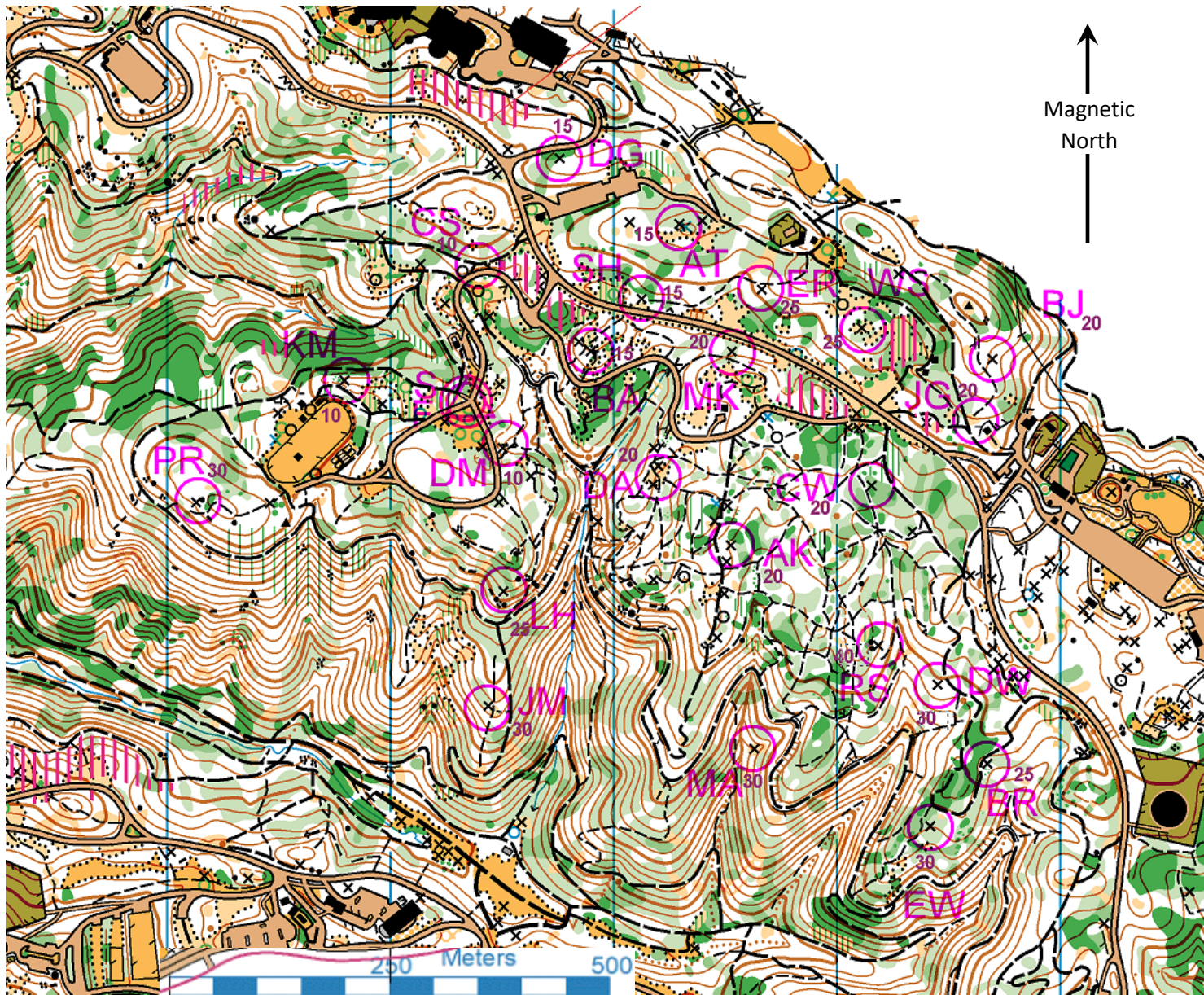


# JOAQUIN MILLER PARK

Map Scale ~ 1:7500

Team \_\_\_\_\_



Magnetic North

Clue	Pts	ID	No.
Re-entrant, Upper End	20	AK	
Hilltop, NW Part	15	AT	
Hilltop, SW Part	15	BA	
Re-entrant, Upper Part	20	BJ	
Re-entrant, Upper Part	25	BR	
Trail Junction	10	CS	
Re-entrant, Shallow	20	CW	
Clearing	20	DA	
Spur, at Thicket	15	DG	
Re-entrant, Upper Part	10	DM	
Spur	30	DW	
Spur	25	ER	
Re-entrant, Upper End	30	EW	
Small Spur	20	JG	
Spur	30	JM	
Hilltop, W Part	10	KM	
Spur	25	LH	
Eastern Re-entrant	30	MA	
Re-entrant	20	MK	
Small Cliff, Foot	30	PR	
Boulder, SE Side	40	RS	
Small Knoll, Top	15	SH	
Hilltop, NW Part	25	WS	

- forest / open (grass) / sand
- rough open / w/scattered trees
- walk / difficult
- impossible
- undergrowth: slow / difficult
- distinct veg. boundary
- fence: crossable / uncross.
- utility line w/poles
- building / tank
- cliff: passable / impassable
- boulder: small / large
- boulder field / group

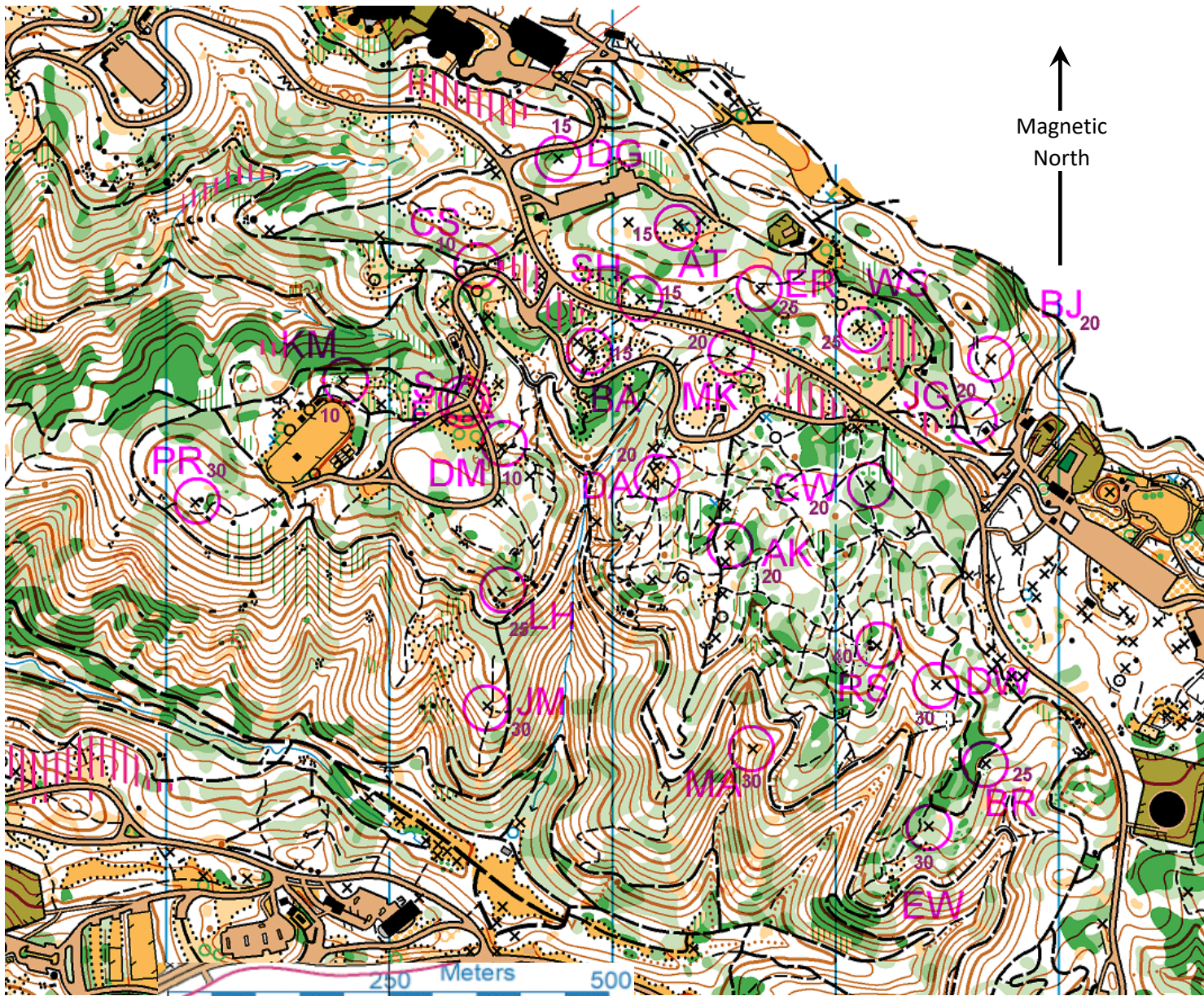
- root stock / stump
- lone tree
- table or bench / 3 or more
- misc. object / monument
- ruin / bridge / culvert
- archery range / tower
- road: double / single lane
- parking: paved / unpaved
- trail: graded
- path
- path: small
- path: indistinct

- ### Legend
- contours / index contour
  - form line w/slope direction
  - depression: large / small
  - knolls
  - earth bank
  - gully / very steep slope
  - pool
  - stream: crossable
  - stream: seasonal
  - spring / hydrant or tap

# JOAQUIN MILLER PARK

Map Scale ~ 1:7500

Team \_\_\_\_\_



Clue	Pts	ID	No.
Trail Junction	10	CS	
Re-entrant, Upper Part	10	DM	
Hilltop, W Part	10	KM	
Hilltop, NW Part	15	AT	
Hilltop, SW Part	15	BA	
Spur, at Thicket	15	DG	
Small Knoll, Top	15	SH	
Re-entrant, Upper End	20	AK	
Re-entrant, Upper Part	20	BJ	
Re-entrant, Shallow	20	CW	
Clearing	20	DA	
Small Spur	20	JG	
Re-entrant	20	MK	
Re-entrant, Upper Part	25	BR	
Spur	25	ER	
Spur	25	LH	
Hilltop, NW Part	25	WS	
Spur	30	DW	
Re-entrant, Upper End	30	EW	
Spur	30	JM	
Eastern Re-entrant	30	MA	
Small Cliff, Foot	30	PR	
Boulder, SE Side	40	RS	

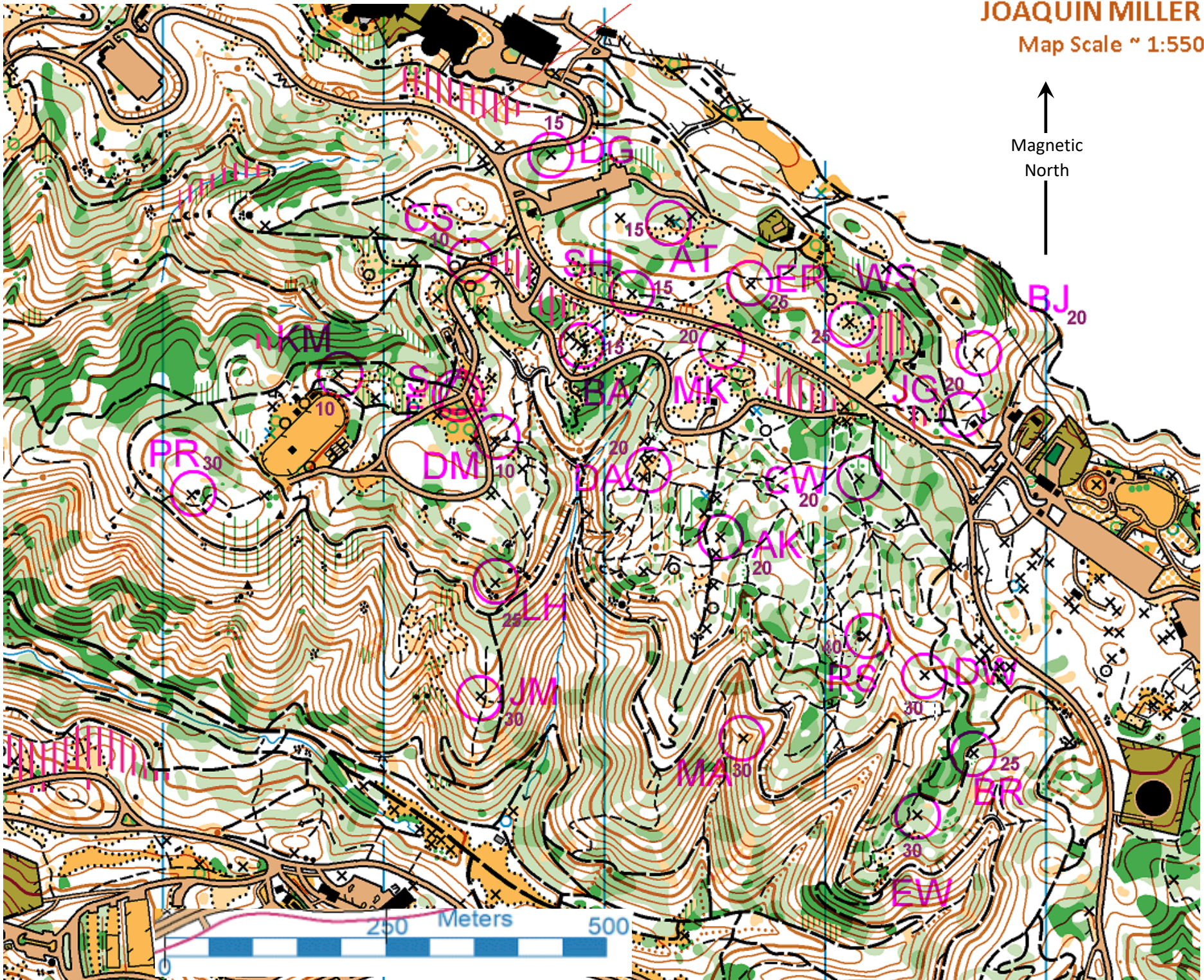
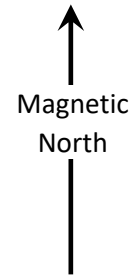
	forest (open grass) / same rough open / w/scattered trees		lone tree
	walk / difficult		table or bench / 3 or more
	impossible		misc. object / monument
	undergrowth: slow / difficult		ruin / bridge / culvert
	distinct veg. boundary		archery range / tower
	fence: crossable / uncross.		road: double / single lane
	utility line w/poles		parking: paved / unpaved
	building / tank		trail: graded
	cliff: passable / impassable		path
	boulder: small / large		path: small
	boulder field / group		path: indistinct

### Legend

- contours / index contour
- form line w/slope direction
- depression: large / small knolls
- earth bank
- gully / very steep slope
- pool
- stream: crossable
- stream: seasonal
- spring / hydrant or tap

# JOAQUIN MILLER PARK

Map Scale ~ 1:5500



# CONTROL CODE LIST – JOAQUIN MILLER PARK PERMANENT COURSE (As of 25 June 2019)

	ALPHA			NUMER		
	LETTERS	NUMBER	CLUE	NUMBER	LETTERS	CLUE
1	<b>AK</b>	<b>20</b>	Re-entrant, Upper End	<b>2</b>	<b>MK</b>	Re-entrant
2	<b>AT</b>	<b>28</b>	Hilltop, NW Part	<b>3</b>	<b>SH</b>	Small Knoll, Top
3	<b>BA</b>	<b>5</b>	Hilltop, SW Part	<b>5</b>	<b>BA</b>	Hilltop, SW Part
4	<b>BJ</b>	<b>15</b>	Re-entrant, Upper Part	<b>6</b>	<b>CS</b>	Trail Junction
5	<b>BR</b>	<b>22</b>	Re-entrant, Upper Part	<b>7</b>	<b>LH</b>	Spur
6	<b>CS</b>	<b>6</b>	Trail Junction	<b>8</b>	<b>DM</b>	Re-entrant, Upper Part
7	<b>CW</b>	<b>14</b>	Re-entrant, Shallow	<b>9</b>	<b>EW</b>	Re-entrant, Upper End
8	<b>DA</b>	<b>19</b>	Clearing	<b>12</b>	<b>WS</b>	Hilltop, NW Part
9	<b>DG</b>	<b>21</b>	Spur, at Thicket	<b>14</b>	<b>CW</b>	Re-entrant, Shallow
10	<b>DM</b>	<b>8</b>	Re-entrant, Upper Part	<b>15</b>	<b>BJ</b>	Re-entrant, Upper Part
11	<b>DW</b>	<b>17</b>	Spur	<b>16</b>	<b>JG</b>	Small Spur
12	<b>ER</b>	<b>23</b>	Spur	<b>17</b>	<b>DW</b>	Spur
13	<b>EW</b>	<b>9</b>	Re-entrant, Upper End	<b>18</b>	<b>RS</b>	Boulder, SE Side
14	<b>JG</b>	<b>16</b>	Small Spur	<b>19</b>	<b>DA</b>	Clearing
15	<b>JM</b>	<b>24</b>	Spur	<b>20</b>	<b>AK</b>	Re-entrant, Upper End
16	<b>KM</b>	<b>27</b>	Hilltop, W Part	<b>21</b>	<b>DG</b>	Spur, at Thicket
17	<b>LH</b>	<b>7</b>	Spur	<b>22</b>	<b>BR</b>	Re-entrant, Upper Part
18	<b>MA</b>	<b>25</b>	Eastern Re-entrant	<b>23</b>	<b>ER</b>	Spur
19	<b>MK</b>	<b>2</b>	Re-entrant	<b>24</b>	<b>JM</b>	Spur
20	<b>PR</b>	<b>26</b>	Small Cliff, Foot	<b>25</b>	<b>MA</b>	Eastern Re-entrant
21	<b>RS</b>	<b>18</b>	Boulder, SE Side	<b>26</b>	<b>PR</b>	Small Cliff, Foot
22	<b>SH</b>	<b>3</b>	Small Knoll, Top	<b>27</b>	<b>KM</b>	Hilltop, W Part
23	<b>WS</b>	<b>12</b>	Hilltop, NW Part	<b>28</b>	<b>AT</b>	Hilltop, NW Part
	<b>BE</b>	<b>13</b>	MISSING	<b>13</b>	<b>BE</b>	MISSING
	<b>DE</b>	<b>11</b>	MISSING	<b>11</b>	<b>DE</b>	MISSING
	<b>JS</b>	<b>10</b>	MISSING	<b>10</b>	<b>JS</b>	MISSING

Propped up but In need of repair include: ER, WS, JG, PR, DM, LH, DA as of 24 June 2019

Clue	Pts	ID	No.
Re-entrant, Upper End	20	<b>AK</b>	
Hilltop, NW Part	15	<b>AT</b>	
Hilltop, SW Part	15	<b>BA</b>	
Re-entrant, Upper Part	20	<b>BJ</b>	
Re-entrant, Upper Part	25	<b>BR</b>	
Trail Junction	10	<b>CS</b>	
Re-entrant, Shallow	20	<b>CW</b>	
Clearing	20	<b>DA</b>	
Spur, at Thicket	15	<b>DG</b>	
Re-entrant, Upper Part	10	<b>DM</b>	
Spur	30	<b>DW</b>	
Spur	25	<b>ER</b>	
Re-entrant, Upper End	30	<b>EW</b>	
Small Spur	20	<b>JG</b>	
Spur	30	<b>JM</b>	
Hilltop, W Part	10	<b>KM</b>	
Spur	25	<b>LH</b>	
Eastern Re-entrant	30	<b>MA</b>	
Re-entrant	20	<b>MK</b>	
Small Cliff, Foot	30	<b>PR</b>	
Boulder, SE Side	40	<b>RS</b>	
Small Knoll, Top	15	<b>SH</b>	
Hilltop, NW Part	25	<b>WS</b>	

Clue	Pts	ID	No.
Trail Junction	10	<b>CS</b>	
Re-entrant, Upper Part	10	<b>DM</b>	
Hilltop, W Part	10	<b>KM</b>	
Hilltop, NW Part	15	<b>AT</b>	
Hilltop, SW Part	15	<b>BA</b>	
Spur, at Thicket	15	<b>DG</b>	
Small Knoll, Top	15	<b>SH</b>	
Re-entrant, Upper End	20	<b>AK</b>	
Re-entrant, Upper Part	20	<b>BJ</b>	
Re-entrant, Shallow	20	<b>CW</b>	
Clearing	20	<b>DA</b>	
Small Spur	20	<b>JG</b>	
Re-entrant	20	<b>MK</b>	
Re-entrant, Upper Part	25	<b>BR</b>	
Spur	25	<b>ER</b>	
Spur	25	<b>LH</b>	
Hilltop, NW Part	25	<b>WS</b>	
Spur	30	<b>DW</b>	
Re-entrant, Upper End	30	<b>EW</b>	
Spur	30	<b>JM</b>	
Eastern Re-entrant	30	<b>MA</b>	
Small Cliff, Foot	30	<b>PR</b>	
Boulder, SE Side	40	<b>RS</b>	

