

Deer Creek Hills

Open Space Preserve managed by
The Sacramento Valley Conservancy

Orienteering Map by Gold Country Orienteers

SCALE 1:15000

Contour Interval 5 meters

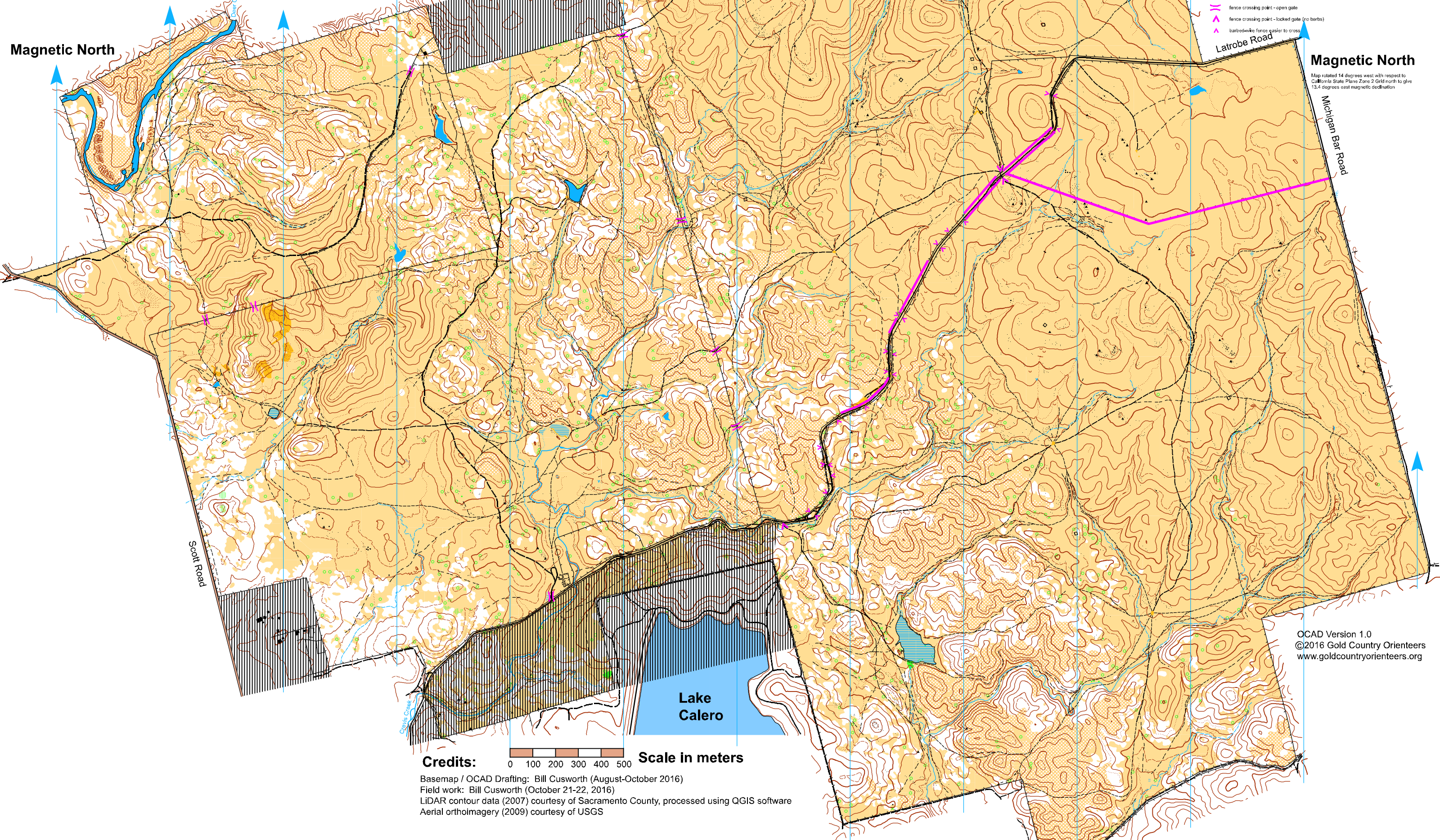
Magnetic North

Magnetic North

Map rotated 14 degrees west with respect to
California State Plane Zone 2 Grid north to give
13.4 degrees axial magnetic declination

Legend

- paved road
- dirt road
- vehicle track
- large trail / small vehicle track
- small trail
- indistinct trail
- indistinct vehicle track
- power line large, small
- fence low, ruined
- high fence, earth bank
- impassable dft
- passable rock face
- crossack stream
- crossack small stream
- minor water channel
- narrow marsh
- contour (5 m)
- index contour (25 m)
- form line (2.5 m)
- earth wall large, small
- erosion gully/ditch: large, small
- small, large depression
- knoll, elongated knoll, broken ground
- boulder: small (<2m), medium (2-3m), large (>3m)
- boulder cluster, large cluster (>3m), boulder field
- rock pillar, stony ground, man-made object
- large lone tree, small lone tree or thicket, dead tree (snag)
- water trough, water hole, rootstock
- building, small building, small ruin
- open land, rough open land
- semi-open land, rough semi-open
- forest open (>80%), slow run (50-80%)
- forest difficult to run (20-50%), light (<20%)
- undergrowth: slow run, difficult to run
- lake, pond
- marsh: distinct, indistinct
- marsh: impassable
- bare rock, out of bounds
- new barbed-wire fence, hard to cross
- fence crossing point - open gate
- fence crossing point - locked gate (no barbs)
- barbed-wire fence easier to cross



Scott Road

Latrobe Road

Michigan Bar Road

Lake Calero

Credits: Scale in meters

0 100 200 300 400 500
Basemap / OCAD Drafting: Bill Cusworth (August-October 2016)
Field work: Bill Cusworth (October 21-22, 2016)
LiDAR contour data (2007) courtesy of Sacramento County, processed using QGIS software
Aerial orthoimagery (2009) courtesy of USGS

OCAD Version 1.0
©2016 Gold Country Orienteers
www.goldcountryorienteers.org